



ENTREPRENEUR EDUCATION

ONSHORE PROMOS

JANUARY / FEBRUARY / MARCH 2025

CONTENTS

P2 GENERAL ENGLISH

P4 SPECIAL ENGLISH PROGRAMS

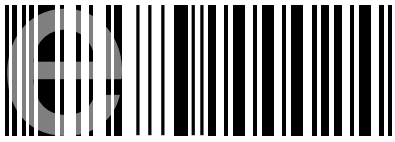
P6 WHAT'S NEW AT ENGLISH

P7 HOMESTAY PRICES

P8 VET PROMOTIONS INDIVIDUAL COURSES

P10 VET PACKAGES

P18 CONDITIONS & RESOURCE FEES



entrepreneureducation

GENERAL ENGLISH PROMO

JAN/FEB/MAR 2025

ENGLISH IS BACK

FROM
\$230p/w



ONSHORE

**SELECTED COUNTRIES*

MORNING

\$230 per week

+ \$10 material fee per week

NIGHT

\$230 per week

+ \$10 material fee per week

ENROLMENT FEE \$250

COUNTRIES ACCEPTED

- Argentina
- Brazil
- Chile
- Czech Republic
- France
- Spain
- Germany
- Italy
- Japan
- Lithuania
- Mexico
- Panama
- Puerto Rico
- Paraguay
- South Korea
- Taiwan

*** If the country is not listed above, please check with enrolments.**

CONDITIONS

- These promotions are for applications received in January, February or March 2025.
- Onshore students are able to request payment plans for English studies.
- If packaging with a VET course on a student visa, maximum study duration will be 24 weeks of General English.
- Students on a pathway into VET courses will need to meet the required English level before entering the VET course.

SAMPLE TIMETABLES

Morning Course

Time	Monday	Tuesday	Wednesday	Thursday	Friday
9:00 - 10:00	Grammar & vocabulary revisions	Vocabulary introduction	Reading & vocabulary	Pronunciation & intonation	Speaking & functional usage
10:00 - 11:00	Weekly revision test	Vocabulary tasks & activities	Listening tasks & activities	Grammar tasks & activities	Weekly wrap up
11:00 - 11:15	BREAK				
11:15 - 12:15	Listening & reading test; speaking test	Introduction of weekly grammar points	Grammar support & extension	Listening tasks	CLUBS
12:15 - 13:15	Test correction & feedback	Grammar games & activities	Writing	Speaking practice	

Night Course

Time	Monday	Tuesday	Wednesday	Thursday	Friday
17:00 - 18:00	Grammar & vocabulary revisions	Grammar introduction	Reading & vocabulary	Pronunciation & intonation	Speaking & functional usage
18:00 - 19:00	Weekly revision test	Grammar use	Grammar Support & extension	Listening support	Weekly wrap up
19:00 - 19:15	BREAK				
19:15 - 20:15	Listening & reading test; speaking test	Vocabulary introduction	Writing	Speaking	CLUBS
20:15 - 21:15	Test correction & feedback	Vocabulary workout	Writing feedback	Grammar practice	

Please note: timetables are subject to change



BARISTA

2 WEEK COURSE

2025 PROMO

Expires 31st March 2025



2 weeks
ENGLISH
+ BARISTA
**PACKAGE
SPECIAL**
\$1,500



Barista Standalone (or add-on)

Total = \$900

Visa Type

- Student visa
- Working Holiday visa
- Tourist visa
- 408 visa

Includes:

- Material fee
- Barista reference letter
- (optional) Extra unpaid internship, job interview and trial opportunity

- **Practical 2 weeks Barista course**
Roasting, coffee beans, espresso extraction, milk steaming, latte art, coffee machine maintenance, unpaid internship
- 1:1 or maximum 1:2 teaching at real cafe industry

Contact:

gabriela@101-marketing.com.au

korea@101-marketing.com.au

SAMPLE TIMETABLE:

GROUP A GE Morning + Barista		MONDAY	TUESDAY	WEDNESDAY	THURSDAY	FRIDAY
1ST WEEK	09:00 - 13:15	Orientation	English (4h)	English (4h)	English (4h)	English (4h)
	15:00 - 17:00		Barista (2h)	Barista + Practice (2h)	Practice (2h)	
2ND WEEK	09:00 - 13:15	English (4h)	English (4h)	English (4h)	English (4h)	English (4h)
	15:00 - 17:00		Barista (2h)	Practice (2h)		Internship (2h) Time: TBC

Please note: GE Evening timetable 17:00 - 21:15

DEMI PAIR ENGLISH PROGRAM

ALL REGIONS



\$4,300

12
WEEKS



ONLY FOR IMAGINE DEMI PAIRS:

- Onshore Orientation (Bluecard guide, T&C, etc)
- Airport pick up on arrival day (one way)
- Quarterly Demi Pair event

HOST FAMILY PROVIDES:

- Own room and board
- Monday - Friday: Breakfast & Dinner
- Weekend: 3 meals a day

STUDENT PROVIDES:

- 15 hours per week Housework & Childcare

** Student must hold a working holiday visa or a student visa*

** Promotion expires 31st March 2025*

INCLUDES:

- Enrolment fee
- Resource fee
- 12 weeks GE morning class
- 12 weeks (free extension available) Demi Pair contract
- Pre-interview
- Demi Pair guidebook
- Bluecard
- English certificate
- Demi Pair certificate
- Reference
- Basic airport pick up (one way)

DISCOVER *WHAT'S NEW* AT ENTREPRENEUR ENGLISH



BONUS CLASSES (FREE AFTERNOON CLASSES)

Every weekday, enjoy a free, one-hour class to boost your skills and connect with others. Just sign up and show up!



LEARNING BEYOND THE CLASSROOM

Expand your English skills beyond traditional settings. Learn and apply your skills in real-world environments!



EXCURSION BOOKING PAGE

Plan your next adventure with ease. Visit our website to browse and book upcoming excursions

Book now: [Excursions Online Booking](#)



ACTIVITIES CALENDAR

Discover daily activities and excursions every month! Practice English while exploring Australia

Explore here: [Entrepreneur Activities](#)



NEW SOCIAL MEDIA PAGES

Stay connected with the latest updates at Entrepreneur Education English. Follow us on Instagram for news and highlights!

Click here for our [Instagram page](#)



STUDENT PORTAL

Manage your enrolment, feedback, payments, and more - all in one place

Watch our video on how to use it: [Watch Now](#)



ONLINE ENGLISH TESTING

Simplify applications with pre-arrival testing. Email us your student's email address, and we'll handle the rest!



Scan here for all the information you need



CONTACT US

Phone: 07 5538 6569

Email: info@entrepreneur.edu.au

www.entrepreneur.edu.au

Learn. Explore.
Grow with
Entrepreneur
Education English

Gold Coast Student Accommodation Centre

Service Type	Fees	Extra weekly prices	Fee per person
Individual student Homestay placement	\$300 per person	Special Diets - Halal, Gluten Free, Vegetarian, Vegan, Coeliac	\$60
Twin share student Homestay placement	\$250 per person	Christmas Day Surcharge (one off fee, not weekly)	\$50
Homestay Extension Fee	\$150 per person		

Individual Homestay Accommodation weekly prices (2 week minimum stay) *Includes WiFi internet	Fee per person
Room only accommodation	\$320
Breakfast and dinner daily	\$400
Breakfast and dinner weekdays, three meals Saturday and Sunday	\$410
Three meals daily	\$440

Twin share Homestay Accommodation weekly prices (in a shared bedroom) *Includes WiFi internet	Fee for two people
Room only accommodation	\$510
Breakfast and dinner daily	\$680
Breakfast and dinner weekdays, three meals Saturday and Sunday	\$700
Three meals daily	\$740

Airport Transfers

Service Type	Fee
Private airport transfer from Brisbane airport	\$231 each way
Private airport transfer from Gold Coast airport	\$170 each way
Basic airport transfer from Brisbane airport	\$120 each way
Basic airport transfer from Gold Coast airport	\$90 each way
Surcharge for transfers between 8:00pm and 5:00am	\$55 each way
Surcharge for surfboard or additional luggage (over 1 suitcase and 1 hand luggage item)	\$48 each way

ONSHORE PROMO VET INDIVIDUAL COURSES

ENROLMENT FEE: \$250

FACULTY OF DESIGN

	PROMO PRICE	RESOURCE FEE
BSB40820 Certificate IV in Marketing and Communication (38 weeks)	\$5,000	\$400
CUA41120 Certificate IV in Photography and Digital Imaging (38 weeks)	\$6,800	\$800
CUA40720 Certificate IV in Design (40 weeks)	\$5,500	\$450
BSB50620 Diploma of Marketing and Communication (58 weeks)	\$6,500	\$300
CUA50920 Diploma of Photography and Digital Imaging (58 weeks)	\$8,000	\$800
CUA50720 Diploma of Graphic Design (58 weeks)	\$7,250	\$800
BSB60520 Advanced Diploma of Marketing and Communication (58 weeks)	\$6,500	\$400
CUA60320 Advanced Diploma of Graphic Design (74 weeks)	\$8,500	\$800

FACULTY OF ENTREPRENEURSHIP

	PROMO PRICE	RESOURCE FEE
BSB30120 Certificate III in Business (20 weeks)	\$2,900	\$300
BSB40120 Certificate IV in Business (38 weeks)	\$4,500	\$300
BSB50120 Diploma of Business (58 weeks)	\$6,500	\$300

FACULTY OF LEADERSHIP

	PROMO PRICE	RESOURCE FEE
BSB50820 Diploma of Project Management (58 weeks)	\$6,500	\$300
BSB50420 Diploma of Leadership and Management (58 weeks)	\$6,500	\$300
BSB60420 Advanced Diploma of Leadership and Management (58 weeks)	\$6,500	\$300
BSB80120 Graduate Diploma of Management (Learning) (104 weeks)	\$19,000	\$1,000

FACULTY OF HEALTH

	PROMO PRICE	RESOURCE FEE
SIS30321 Certificate III in Fitness (30 weeks)	\$5,500	\$450
SIS40221 Certificate IV in Fitness (54 weeks)	\$7,400	\$450

FACULTY OF TRADE

	PROMO PRICE	RESOURCE FEE
CPC31320 Certificate III in Wall and Floor Tiling (93 weeks)	\$17,000	\$1,750
CPC30620 Certificate III in Painting and Decorating (93 weeks)	\$17,000	\$1,750

FACULTY OF HOSPITALITY

	PROMO PRICE	RESOURCE FEE
SIT30821 Certificate III in Commercial Cookery (40 weeks)	\$8,000	\$2,000
SIT40521 Certificate IV in Kitchen Management (25 weeks)	\$4,700	\$300
SIT50422 Diploma of Hospitality Management (27 weeks)	\$4,500	\$300

ONSHORE PROMO

SAMPLE PAYMENT PLAN

JAN/FEB/MAR 2025

Course	No. of Weeks	PROMO Course Tuition	Enrolment Fee	Resource Fee **	Minimum Deposit	No. of Monthly Instalments	Monthly Payment
Certificate IV in Marketing and Communication	38	\$5,000	\$250	\$400	\$1,150	8	\$563
Certificate IV in Photography and Digital Imaging	38	\$6,800	\$250	\$800	\$1,730	8	\$765
Certificate IV in Design	40	\$5,500	\$250	\$450	\$1,250	8	\$619
Diploma of Marketing and Communication	58	\$6,500	\$250	\$300	\$1,200	13	\$450
Diploma of Photography and Digital Imaging	58	\$8,000	\$250	\$800	\$1,850	13	\$554
Diploma of Graphic Design	58	\$7,250	\$250	\$800	\$1,775	13	\$502
Advanced Diploma of Marketing and Communication	58	\$6,500	\$250	\$400	\$1,300	13	\$450
Advanced Diploma of Graphic Design	74	\$8,500	\$250	\$800	\$1,900	17	\$450
Certificate III in Business	20	\$2,900	\$250	\$300	\$840	3	\$870
Certificate IV in Business	38	\$4,500	\$250	\$300	\$1,000	8	\$506
Diploma of Business	58	\$6,500	\$250	\$300	\$1,200	13	\$450
Diploma of Project Management	58	\$6,500	\$250	\$300	\$1,200	13	\$450
Diploma of Leadership and Management	58	\$6,500	\$250	\$300	\$1,200	13	\$450
Advanced Diploma of Leadership and Management	58	\$6,500	\$250	\$300	\$1,200	13	\$450
Graduate Diploma of Management (Learning)	104	\$19,000	\$250	\$1,000	\$3,150	23	\$743
Certificate III in Fitness	30	\$5,500	\$250	\$450	\$1,250	7	\$707
Certificate IV in Fitness	54	\$7,400	\$250	\$450	\$1,440	12	\$555
Certificate III in Wall and Floor Tiling	93	\$17,000	\$250	\$1,750	\$3,700	21	\$729
Certificate III in Painting and Decorating	93	\$17,000	\$250	\$1,750	\$3,700	21	\$729
Certificate III in Commercial Cookery	40	\$8,000	\$250	\$2,000	\$3,050	8	\$900
Certificate IV in Kitchen Management	25	\$4,700	\$250	\$300	\$1,020	6	\$705
Diploma of Hospitality Management (Cookery)	27	\$4,500	\$250	\$300	\$1,000	6	\$675

* Lower deposits can be requested for Cookery package, Graduate Diploma or Trade courses - \$500 minimum

VET PACKAGES



FACULTY OF HOSPITALITY PACKAGE

COOKERY PACKAGE



FACULTY OF DESIGN PACKAGES

GRAPHIC DESIGN

PHOTOGRAPHY

MARKETING



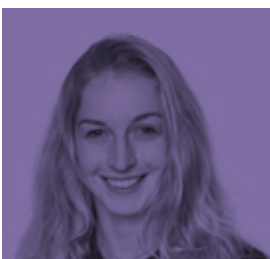
FACULTY OF HEALTH PACKAGE

FITNESS PACKAGE



FACULTY OF ENTREPRENEURSHIP PACKAGE

BUSINESS PACKAGE



FACULTY OF LEADERSHIP PACKAGE

LEADERSHIP PACKAGE

ONSHORE PROMO

COOKERY PACKAGE



COOKERY PACKAGE

Certificate III in Commercial Cookery \$7,000	+	Certificate IV in Kitchen Management \$4,500	+	Diploma of Hospitality (Commercial Cookery) \$4,000	=	\$18,100
Material Fee \$2000		Material Fee \$300		Material Fee \$300		

DEPOSIT FOR COE & PAYMENT PLAN

Course	Weeks	Promo Price	Enrolment Fee	Resource Fee	Deposit for CoE's	No. Monthly Instalments	Monthly Payment
Certificate III in Commercial Cookery	40	\$7,000	\$250	\$2000	\$1,450	8	\$975
Certificate IV in Kitchen Management	25	\$4,500	\$0	\$300	\$750	6	\$675
Diploma of Hospitality (Commercial Cookery)	27	\$4,000	\$0	\$300	\$700	6	\$600

ONSHORE PROMO

DESIGN PACKAGE

OPTION 1 *(Certificate IV + Diploma + Advanced Diploma)*

Certificate IV in Design \$5,000	+	Diploma of Graphic Design \$7,000	+	Advanced Diploma of Graphic Design \$8,000	=	\$22,050
Material Fee \$450		Material Fee \$800		Material Fee \$800		

OPTION 2 *(Certificate IV + Diploma)*

Certificate IV in Design \$5,000	+	Diploma of Graphic Design \$7,000	=	\$13,250
Material Fee \$450		Material Fee \$800		

OPTION 3 *(Diploma + Advanced Diploma)*

Diploma of Graphic Design \$7,000	+	Advanced Diploma of Graphic Design \$8,000	=	\$16,600
Material Fee \$800		Material Fee \$800		

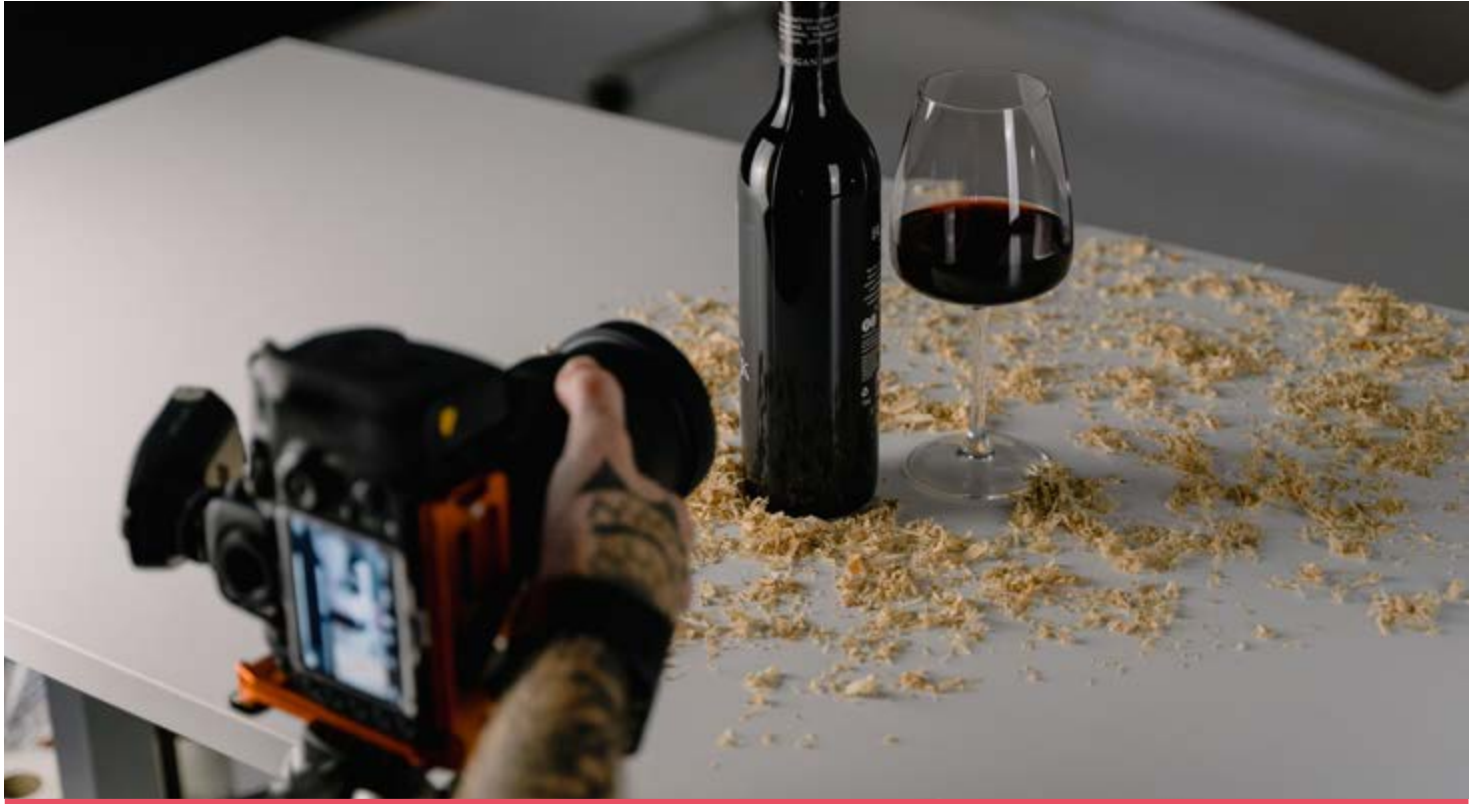


DEPOSIT FOR COE & PAYMENT PLAN

Course	Weeks	Promo Price	Enrolment Fee	Resource Fee	Deposit for CoE's	No. Monthly Instalments	Monthly Payment
Certificate IV in Design	40	\$5,000	\$250	\$450	\$1,950	8	\$469
Diploma of Graphic Design	58	\$7,000	\$0	\$800	\$1,500	13	\$485
Advanced Diploma of Graphic Design	74	\$8,000	\$0	\$800	\$1,600	17	\$424

ONSHORE PROMO

PHOTOGRAPHY PACKAGE



PHOTOGRAPHY PACKAGE:

Certificate IV in Photography & Digital Imaging \$6,500	+	Diploma of Photography & Digital Imaging \$7,900	=	\$16,000
Material Fee \$800		Material Fee \$800		

DEPOSIT FOR COE & PAYMENT PLAN

Course	Weeks	Promo Price	Enrolment Fee	Resource Fee	Deposit for CoE's	No. Monthly Instalments	Monthly Payment
Certificate IV in Photography & Digital Imaging	38	\$6,500	\$250	\$800	\$2,675	8	\$609
Diploma of Photography & Digital Imaging	58	\$7,900	\$0	\$800	\$1,590	13	\$547

ONSHORE PROMO

MARKETING PACKAGE



MARKETING PACKAGE:

OPTION 1 *(Cert IV + Diploma)*

Certificate IV in Marketing & Communication \$4,700	+	Diploma of Marketing & Communication \$6,300	=	\$11,700
Material Fee \$400		Material Fee \$300		

OPTION 2 *(Cert IV + Diploma + Advanced)*

Advanced Diploma of Marketing & Communication \$6,300	+	Material Fee \$400	=	\$18,400
---	---	------------------------------	---	-----------------

DEPOSIT FOR COE & PAYMENT PLAN

Course	Weeks	Promo Price	Enrolment Fee	Resource Fee	Deposit for CoE's	No. Monthly Instalments	Monthly Payment
Certificate IV in Marketing & Communication	38	\$4,700	\$250	\$400	\$1,825	8	\$441
Diploma of Marketing & Communication	58	\$6,300	\$0	\$300	\$930	13	\$436
Advanced Diploma of Marketing & Communication	58	\$6,300	\$0	400	\$1,030	13	\$436

ONSHORE PROMO FITNESS PACKAGE



FITNESS PACKAGE

Certificate III in Fitness \$5,000	+	Certificate IV in Fitness \$7,000	=	\$12,900
Material Fee \$450		Material Fee \$450		

DEPOSIT FOR COE & PAYMENT PLAN

Course	Weeks	Promo Price	Enrolment Fee	Resource Fee	Deposit for CoE's	No. Monthly Instalments	Monthly Payment
Certificate III in Fitness	30	\$5,000	\$250	\$450	\$1,950	7	\$536
Certificate IV in Fitness	54	\$7,000	\$0	\$450	\$1,150	12	\$525

ONSHORE PROMO

BUSINESS PACKAGE

OPTION 1 *(Certificate III + Certificate IV + Diploma)*

Certificate III in Business \$3,000	+	Certificate IV in Business \$4,500	+	Diploma of Business \$6,000	=	\$14,400
Material Fee \$300		Material Fee \$300		Material Fee \$300		

OPTION 2 *(Certificate III + Certificate IV)*

Certificate III in Business \$3,000	+	Certificate IV in Business \$4,500	=	\$8,100
Material Fee \$300		Material Fee \$300		

OPTION 3 *(Certificate IV + Diploma)*

Certificate IV in Business \$4,500	+	Diploma of Business \$6,000	=	\$11,100
Material Fee \$300		Material Fee \$300		



DEPOSIT FOR COE & PAYMENT PLAN

Course	Weeks	Promo Price	Enrolment Fee	Resource Fee	Deposit for CoE's	No. Monthly Instalments	Monthly Payment
Certificate III in Business	20	\$3,000	\$250	\$300	\$850	3	\$900
Certificate IV in Business	38	\$4,500	\$0	\$300	\$750	8	\$506
Diploma of Business	58	\$6,000	\$0	\$300	\$900	13	\$415

ONSHORE PROMO

LEADERSHIP PACKAGE

OPTION 1

Diploma of Project Management \$6,200	+	Diploma of Leadership & Management \$6,200	+	Advanced Diploma of Leadership & Management \$6,200	=	\$19,500
Material Fee \$300		Material Fee \$300		Material Fee \$300		

OPTION 2

Diploma of Leadership & Management \$6,200	+	Advanced Diploma of Leadership & Management \$6,200	=	\$13,000
Material Fee \$300		Material Fee \$300		



OPTION 3

Diploma of Project Management \$6,200	+	Advanced Diploma of Leadership & Management \$6,200	=	\$13,000
Material Fee \$300		Material Fee \$300		

DEPOSIT FOR COE & PAYMENT PLAN

Course	Weeks	Promo Price	Enrolment Fee	Resource Fee	Deposit for CoE's	No. Monthly Instalments	Monthly Payment
Diploma of Project Management	58	\$6,200	\$250	\$300	\$1,170	13	\$429
Diploma of Leadership & Management	58	\$6,200	\$0	\$300	\$920	13	\$429
Advanced Diploma of Leadership & Management	58	\$6,200	\$0	\$300	\$920	13	\$429

CONDITIONS

- Above prices ONLY for the months of January, February and March 2025
- Students must send their Enrolment Form to be processed in January, February or March 2025
- Students must pay enrolment fees and resource fees
- Students must pass our English requirements
- Graphic Design enrolments must fulfill the design entry requirements
- Onshore students must pay a minimum deposit of \$500 for all courses
- (Extras = enrolment fee, resource fee and CoE deposits)
- This PROMO does not apply to any student with a current Letter of offer at Entrepreneur Education

RESOURCE FEES

- **\$300** (per course, excluding the below) non-refundable
- Certificate IV in Design **\$450**
- Diploma of Graphic Design **\$800**
- Advanced Diploma of Graphic Design **\$800**
- Advanced Diploma of Marketing & Communication **\$400**
- Certificate IV in Marketing & Communication **\$400**
- Certificate IV Photography and Digital Imaging **\$800**
- Diploma of Photography and Digital Imaging **\$800**
- Certificate III in Fitness **\$450**
- Certificate IV in Fitness **\$450**
- Certificate III in Wall and Floor Tiling **\$1,750**
- Certificate III in Painting and Decorating **\$1,750**
- Graduate Diploma of Management (Learning) **\$1,000**
- Certificate III in Commercial Cookery **\$2,000**